

ThermAir Burners

Model TA400 *version 1.00*

Main Specifications - TA400

PARAMETER		SPECIFICATIONS	
		English	Metric
Maximum input (To maintain 15% excess air with the standard air orifice and standard combustion air blower.)	60 Hz packaged blower	Capacity @ Chamber Pressure	
		BTU/hr @ "w.c.	kW @ mbar
		4,332,000 @ -1.0	1270 @ -2,5
		4,000,000 @ 0.0	1173 @ 0,0
		3,919,000 @ 1.0	1149 @ 2,5
Minimum input	Natural Gas, Propane or Butane	BTU/hr	kW
		133,000	40
Main gas inlet pressure • fuel pressure at gas inlet (Tap "B")	Natural Gas	5.4 "w.c.	13 mbar
	Propane	6.4 "w.c.	16 mbar
	Butane	6.5 "w.c.	16 mbar
High fire flame length • measured from the burner flange.	Natural gas	88 in.	2235 mm
	Propane	102 in.	2590 mm
	Butane	104 in.	2590 mm
Maximum chamber temperature	Alloy Tube	°F	°C
		1500	815
Flame detection	UV scanner only		
Fuel	Natural Gas, Propane or Butane. <i>For any other mixed gas, contact Eclipse Combustion for orifice sizing</i>		

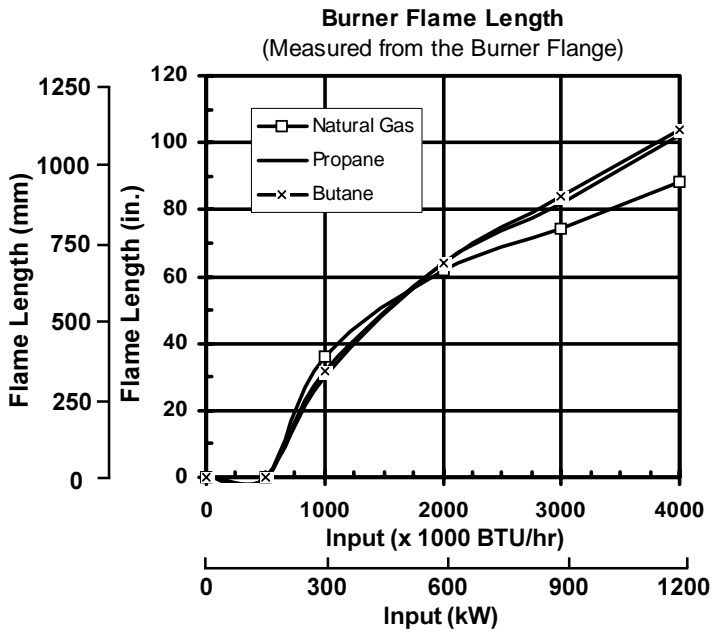
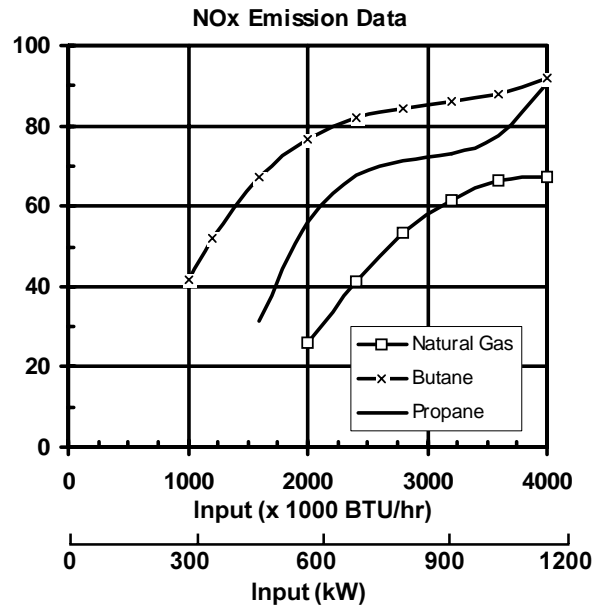
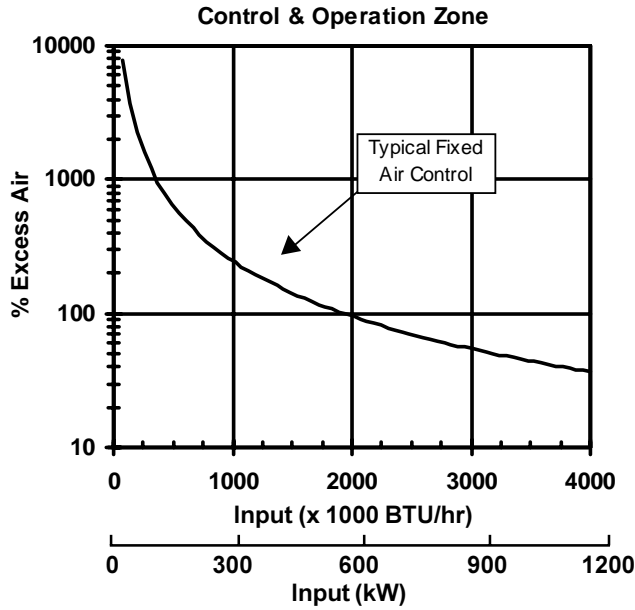
- All information is based on laboratory testing in neutral (0.0"w.c.) chamber with standard combustor design. Different chamber conditions and/or combustor design will affect the data.
- Maximum inputs are given for the standard combustion air blower without an air filter.
- All inputs based upon gross calorific values and standard conditions: 1 atmosphere, 70° F (21°C).
- Blower motor service factors greater than 1.0 may be required when firing into negative chamber pressure applications. For specific application questions, contact your Eclipse Combustion representative.
- Eclipse reserves the right to change the construction and/or configuration of our products at any time without being obliged to adjust earlier supplies accordingly.



Eclipse Combustion

ISO 9001 Registered

Performance Graphs ThermAir TA400



Notes on emission data

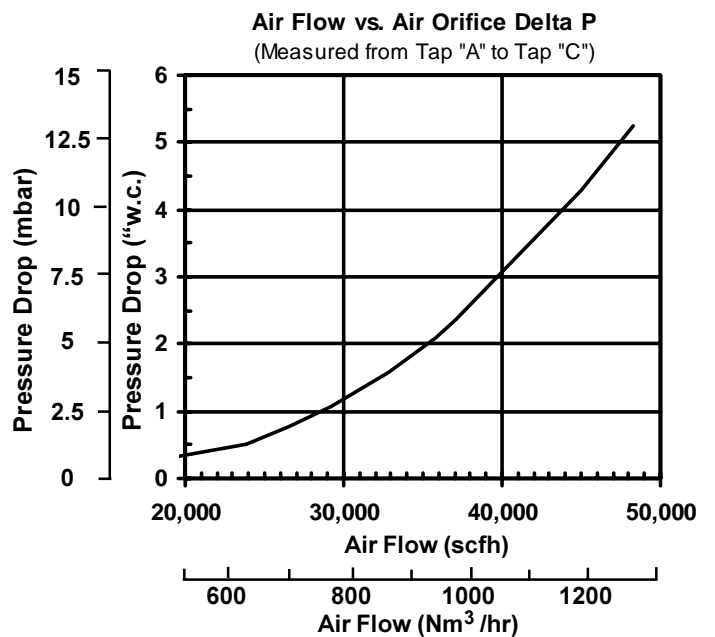
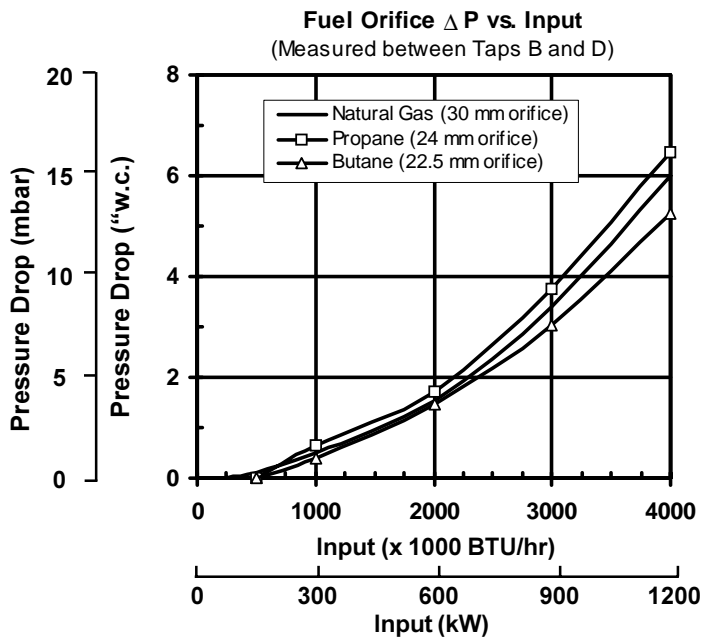
NOx emission data is given for:

- Ambient combustion air ~70° F (20° C)
- Minimal process air velocity
- ppm volume dry at 3% O₂
- Neutral chamber pressure

Emissions are influenced by:

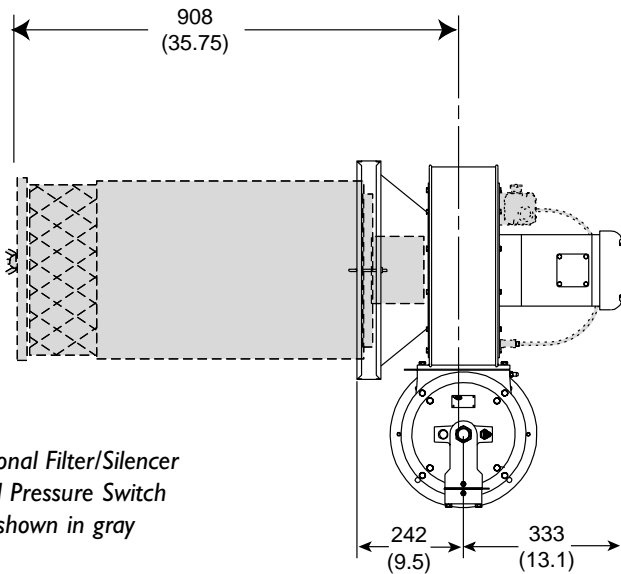
- Chamber conditions
- Fuel type
- Firing rate
- Combustion air temperature

CO emission is largely influenced by chamber conditions. Contact your local Eclipse Combustion representative for an estimate of CO emission on your application.

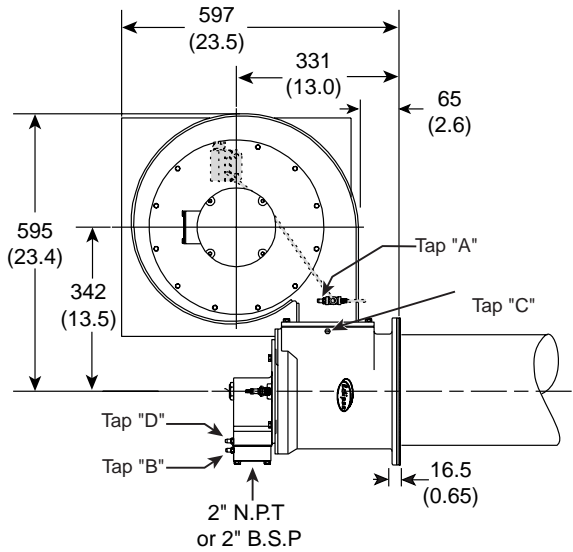


Dimensions-TA400

mm (in)

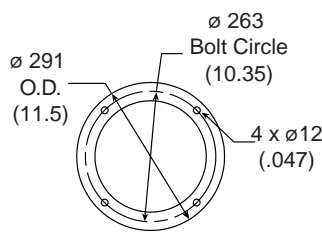


Optional Filter/Silencer and Pressure Switch shown in gray

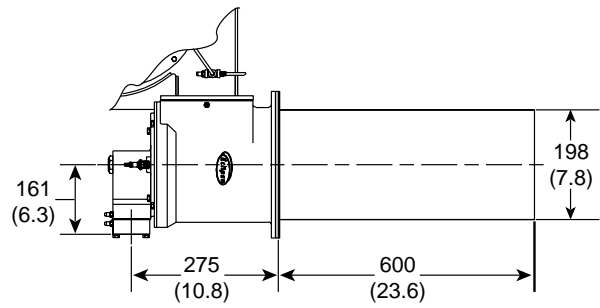


Port Connections	
Sparkplug	14mm
Flamerod or Scanner	0.5" NPT
Peepsight	1" NPT

Weights		
	lb	kg
Burner, w/ blower	163	74
Burner, less blower	90	41
Filter/Silencer	52	24

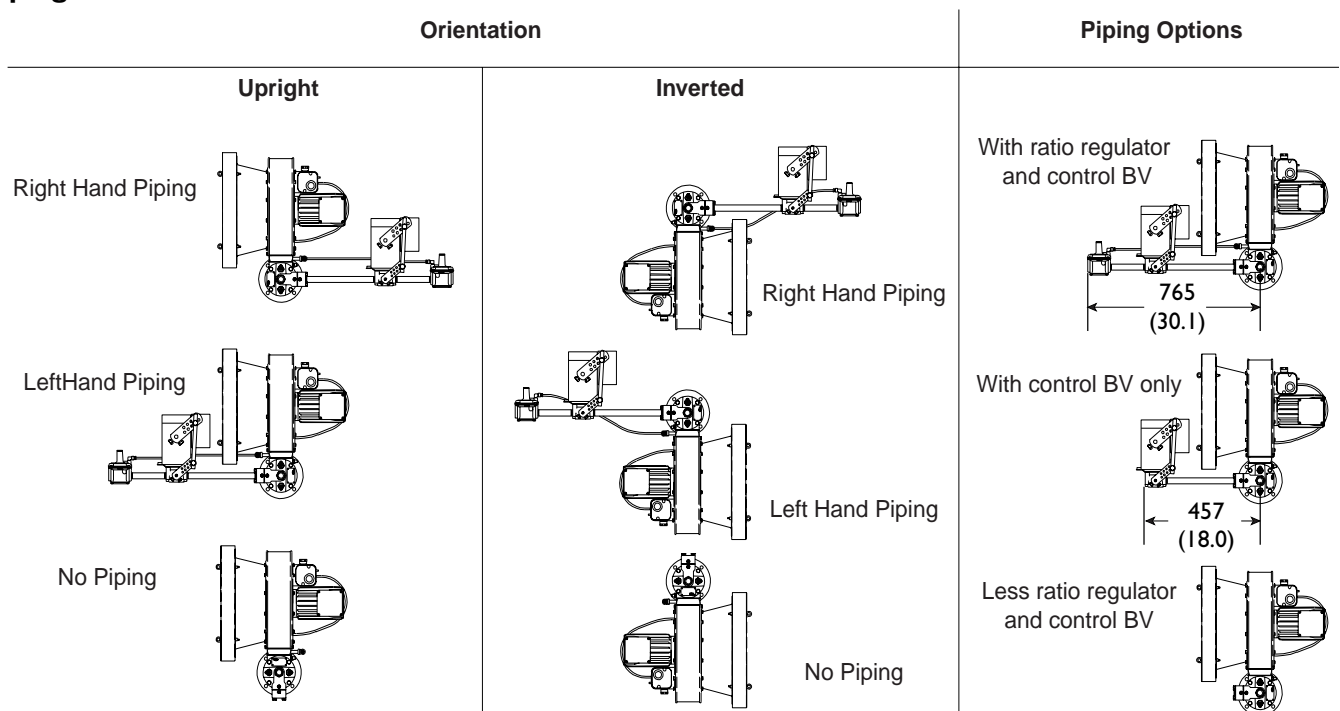


Mounting Pattern



310 Stainless Steel Alloy Tube

Piping





Offered By:

Power Equipment Company
2011 Williamsburg Road
Richmond, Virginia 23231
Phone (804) 236-3800
Fax (804) 236-3882

www.peconet.com